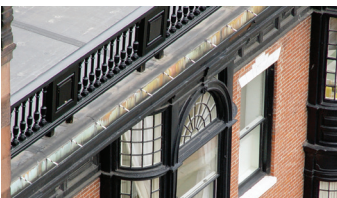




# Travelers<sup>Express</sup>® Eligibility Guide

SELECT ACCOUNTS | SMALL BUSINESS

Submissions falling within the following exposure maximums can be processed through Travelers<sup>Express for Master Pac</sup><sup>SM</sup>.



### **Apartment Pac**<sup>SM</sup>

- Up to 5 locations
- Up to 6 stories
- \$5 million total insured values per building
- \$15 million total insured values per policy
- \$100,000 total annual payroll



### **Building Pac**<sup>SM</sup>

- Up to 5 locations
- Up to 6 stories
- \$5 million total insured values per building
- \$15 million total Insured values per policy
- \$100,000 total annual payroll



### **Business Pac**<sup>SM</sup>

- Up to 5 locations
- \$5 million total insured values per building
- \$15 million total insured values per policy
- \$5 million total annual sales per policy
- \$700,000 total annual payroll



### **Condominium Pac**<sup>SM</sup>

- Up to 5 locations
- Up to 6 stories
- \$5 million total Insured values per building
- \$15 million total Insured values per policy
- \$100,000 total annual payroll



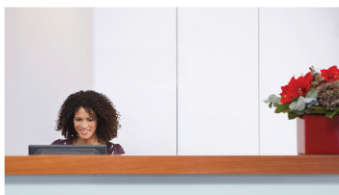
### **Contractors Pac**<sup>SM</sup>

- Up to 2 locations
- \$1 million total insured values per building
- \$100,000 total annual payroll



### **Garage Pac**<sup>SM</sup>

- Up to 2 locations
- \$1.5 million total insured values per building
- \$2 million total insured values per policy
- Up to 8 employees per location
- \$200,000 total annual payroll



### Office Pac<sup>SM</sup>

- Up to 5 locations
- \$5 million total insured values per building
- \$15 million total insured values per policy
- \$5 million total annual sales per policy
- \$3 million total annual payroll



### Religious Pac<sup>SM</sup>

- Up to 2 locations
- \$500,000 total insured values per building
- \$2 million total annual sales per policy
- \$600,000 total annual payroll



### Restaurant Pac<sup>SM</sup>

- Up to 2 locations
- \$1.5 million total insured values per building
- \$2 million total insured values per policy
- \$2.5 million total annual sales per policy
- \$600,000 total annual payroll



### Store Pac<sup>®</sup>

- Up to 5 locations
- \$5 million total insured values per building
- \$15 million total insured values per policy
- \$5 million total annual sales per policy
- \$700,000 total annual payroll



### Technology Office Pac<sup>SM</sup>

- Up to 5 locations
- \$5 million total insured values per location
- \$15 million total insured values per policy
- \$5 million total annual sales per policy
- \$3 million total annual payroll

Accounts will be automatically directed to your Account Executive if any of the following apply:

- All **Pac Plus<sup>SM</sup>** business
- All Wholesale classes of business
- All Manufacturing classes of business
- Five or more Automobiles (in most states)
- Risk in excess of one or more of the above exposure maximums per policy type
- Umbrella limit greater than \$5 million



The Travelers Indemnity Company and its property casualty affiliates.

This material does not amend, or otherwise affect, the provisions or coverages of any insurance policy or bond issued by Travelers. It is not a representation that coverage does or does not exist for any particular claim or loss under any such policy or bond. Coverage depends on the facts and circumstances involved in the claim or loss, all applicable policy or bond provisions, and any applicable law. Availability of coverage referenced in this document can depend on underwriting qualifications and state regulations.

© 2013 The Travelers Indemnity Company. All rights reserved. Travelers and the Travelers Umbrella logo are registered trademarks of The Travelers Indemnity Company in the U.S. and other countries. CX-1414 New 7-13